

Double Girder Wire Rope Hoist 20 tons M6 class Service

Características Esenciales

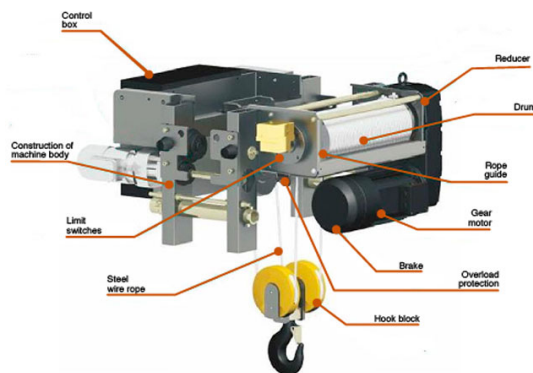


- Equipo de Doble Velocidad, Doble viga. Servicio Heavy Duty H4/M5.
- Dispositivos de Límite de alta precisión, Protección de Sobrecarga y Protección térmica
- Componentes de alta calidad, Motor SEW Eurodrive, VDF Schneider, contactores Eaton/Schneider
- Estándares US y EC ASME HST-1 , ASME B30.16 , ASME B30.17 , EN14492-2 , EN60204-32.
- 3 Años de Garantía, Servicio y Atención al Cliente en Mexico

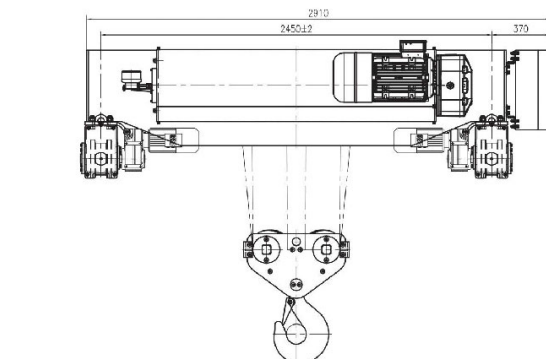
Especificaciones Técnicas

Capacidad de Carga	20 t	Altura de Izaje Estandard (Customizable)	50 ft / 15 m
Velocidad /min	0.8 ft / 3.3 m	Numero de Velocidades	2 Speed
Voltaje	3 Phase 208~240/480V 50/60Hz	Clase de Servicio	H4/M6/3m/Class D
Tipo de Motor	Squirrel Cage Induction Motor	Freno Motor	Electromagnetic Release Brake >125%
Grado de Aislacion	F	Protección IEC Motor	IP55
Protección Tablero de Control	IP65	Control	Pendant Control and Optional Wireless F21
Voltaje del Control	48V	Marca Motor de Izaje	Sew Eurodrive
Reductor de Izaje	Sew Eurodrive FA	Tipo Transmisión / Reductor	Sew Eurodrive
Humedad	<85%	Temperatura	-4°~104° F / -20°~40° C
Potencia del Trolley	1.2 kw x 2	Nivel de Ruido	82 dB
Velocidad del Trolley /min	16 ~ 65 ft/min. / 5 ~ 20 m/min	Normas	ASME HST-4 , ASME B30.16 , B30.17 , EN14492-2 , EN60204-32
Garantía	3 Year	Hoist Contactor Brand	Schneider or EATON

MODULE DESIGN FLEXIBLE COMBINATION



Model/Modelo	PWRHE20TM6B
Power / Potencia	5/20 kW
Rotation Speed Velocidad de Rotación	710/2880 n/min
Insulation / Aislamiento	F
Protection Grade Grado de Protección	IP54
ED rate	40%
Power / Potencia	1.2kWx2
Rotation Speed Velocidad de Rotación	32 n/min
Insulation / Aislamiento	F
Protection Grade Grado de Protección	IP54
ED rate	40%
Girder Gauge Calibre de Viga	2450mm



Compact structure, light weight but with high strength, precise positioning to improve the working efficiency.

Prowinch wire rope hoist adopt European design the mechanical structure is compact and strong but with light weight and small size. For single girder type hoist, low headroom is the standard feature, which means can cover larger room and height on working site. For double girder type hoist, the Wheel pressure is small and can be customized by different girder span our wire rope hoist with dual speed as standard on lifting & travelling, compared with single speed hoist. It will bring good performance on positioning, and will improve the working efficiency absolutely.

Modular design and multiple options can meet various demands of customer

Prowinch concept of modular design has always been throughout the whole product design which ensures the standard and interchangeability of parts greatly reduces the maintenance costs of products. All products series of Prowinch provided with complete set of spare parts and professional service team measures to provide after-sales service to solve the problems from customers in time.

High quality mechanical & electronic components can ensure good working performance

Prowinch select every component seriously no matter to the mechanical parts like motors, brakes and Steel wire rope or the electronics as inverter, contactors, and relay. High quality components are always the basic rule for every good products. We believe that only the good quality components integrated together can ensure the good working performance as complete machine.

Low operation cost. Green energy and environment friendly

Prowinch wire rope hoist with same desing crane can significantly reduce self-weight of complete system and decrease the total power consumption which almost save 30% power every year on average compared with other domestic products. Meanwhile the running noise is lower than national standard which can create a quiet and comfort working environment.

Safe and reliable, running monitoring and simple and convenient maintenance

Prowinch Technology product is provided with varios functions such monitoring protection which can make detailed records of running condition of electric hoist running status of motor and safety working cycle, and provide warning in advance. All records can provide data for maintenance and the root of problema should be understood to be able to provide maintenance much more likely and efficiently.

High Production Efficiency Improved by Precise positioning

Prowinch wire rope hoist with double lifting speed as standard configuration and transitional speed control of trolley ensure the efficient running of crane in workshop and ensure the plans of customers can be



DRIVE TECHNOLOGY

SEW Eurodrive high performance Motor, reducer and brake. Compact design, light weight, low energy consumption, low noise and eco-friendly design. Electromagnetic brake disc (Asbestos-free). Long Service life and easy maintenance.



OVERLOAD PROTECTION

Load Cell connected to a Limit Relay (Adjustable) to avoid overloading of the hoist.



WIRE ROPE GUIDE

Helps the winding of the rope on the drum. Light weight and highly resistance. Design to reduce friction on the wire rope and avoid premature wear.



HIGH-PERFORMANCE WIRE ROPES

High-performance wire rope with tensile strength up to 2160Mpa. Galvanized surface and high flexibility to ensure long service life.



DRUM

Q345 steel, seamless grooved drum. Design to fulfil FEM and ASME standards and ensure a safe operation.



LIMIT SWITCHES

High precision adjustable height limit switches, for all movements of hoist and trolley.



LIFTING HOOK GROUP

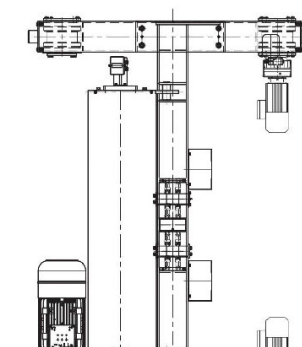
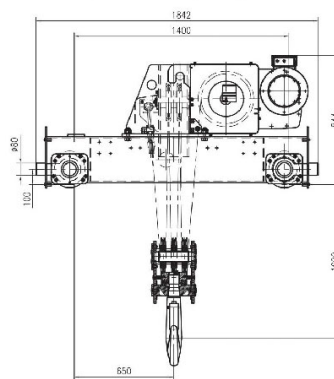
DIN standard lifting hook with safety clasp. Forged by the high-strength material of T grade.



CONTROL BOX

Electric Control box with Schneider Inverter, Eaton contactors and components. Compact design, easy access, IP65 Enclosure.

Referential Images
Specifications may change without notice



Peso & Dimensiones

Peso Total

5512 lbs / 2501 Kg

Referential Images / Imágenes Referenciales

Specifications may change without notice / las especificaciones pueden cambiar sin previo aviso