



## 2,200 lbs. Davit Crane 360 Swivel Electric 110V Winch IP55

### Características Esenciales

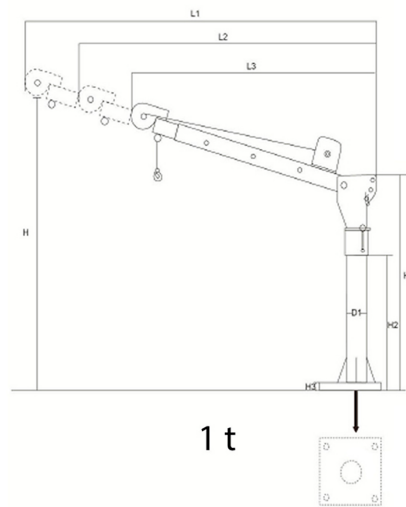
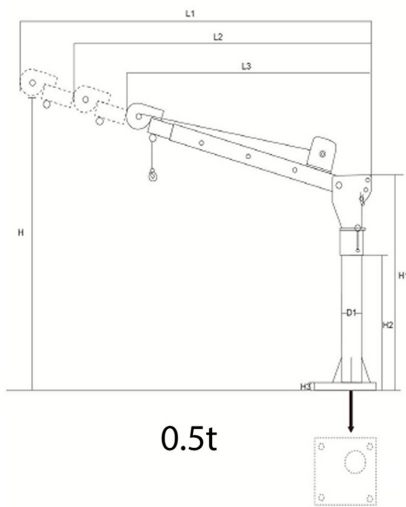
- 1 Años de Garantía, Servicio y Atención al Cliente en Mexico

## Especificaciones Técnicas

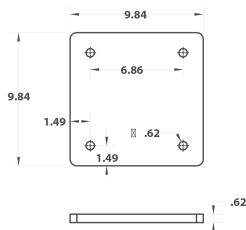
|                              |  |                             |                                   |
|------------------------------|--|-----------------------------|-----------------------------------|
| <b>Capacidad de Carga</b>    | 2200 lbs / 1000 kg   | <b>Velocidad /min</b>       | 33 ft/10m @1line   16ft/5m @2line |
| <b>Numero de Velocidades</b> | 1 Speed  | <b>Voltaje</b>              | 1 Phase 110~120V 60Hz             |
| <b>Clase de Servicio</b>     | H2/M3/1Bm/Class B  | <b>Protección IEC Motor</b> | IP40                              |
| <b>Humedad</b>               | <85%   | <b>Temperatura</b>          | -4°~104° F / -20°~40° C           |
| <b>Normas</b>                | Intertek 4006091 , UL N 1340, CAN/CSA C22.2 , EN14492-2 , EN60204-32 | <b>Garantía</b>             | 1 Year                            |

| BOOM Position | 1100 lb - 0.5 t |         |         |
|---------------|-----------------|---------|---------|
|               | 1               | 2       | 3       |
| A             | 1300 lbs        | 660 lbs | 340 lbs |
| B             | 1150 lbs        | 580 lbs | 290 lbs |
| C             | 1100 lbs        | 550 lbs | 280 lb  |

| BOOM Position | 2200 lb - 1 t |          |         |
|---------------|---------------|----------|---------|
|               | 1             | 2        | 3       |
| A             | 2600 lbs      | 1300 lbs | 780 lbs |
| B             | 2300 lbs      | 1150 lbs | 690 lbs |
| C             | 2200 lbs      | 1100 lbs | 660 lb  |

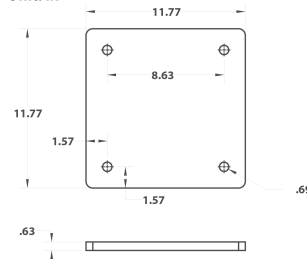


**Base Plate 1100lbs**  
Unit: in



| Variable | Capacity          |                 |
|----------|-------------------|-----------------|
|          | 1120 lb / 0.5 t   | 2240 lb / 1 t   |
| H        | 82 in / 2082 mm   | 85 in / 2159 mm |
| H1       | 46.5 in / 1181 mm | 47 in / 1193 mm |
| H2       | 30 in / 762 mm    |                 |
| H3       | 3/4 in /          |                 |
| L1       | 49 in / 1244 mm   | 51 in / 1295 mm |
| L2       | 42 in / 1066 mm   | 44 in / 1117 mm |
| L3       | 35 in / 889 mm    | 40 in / 1016 mm |
| D1       | 3.5 in / 88.9 mm  | 4 in / 101.6    |

**Base Plate 2200lbs**  
Unit: in



## Peso & Dimensiones

**Peso Total** 324 lbs / 148 Kg

## Detalles del Empaque

**Paquete 1 Peso Neto** 88 lbs / 40 Kg

**Paquete 1 Peso Bruto** 108 lbs / 50 Kg

**Paquete 1 Profundidad** 48 in / 122 cm

**Paquete 1 Ancho** 15 in / 39 cm

**Paquete 1 Altura** 10 in / 26 cm

**Paquete 2 Peso Neto** 85 lbs / 39 Kg

**Paquete 2 Peso Bruto** 100 lbs / 46 Kg

**Paquete 2 Profundidad** 38 in / 97 cm

